



Glenforth Court, Ferrymuir

Retirement apartments in South Queensferry



An elderly couple is shown in a close-up, smiling and looking at a laptop. The woman, on the left, has short blonde hair and is wearing a yellow top. The man, on the right, has white hair and is wearing a light blue polo shirt. They are both looking intently at the laptop screen. The background is bright and out of focus, suggesting an indoor setting with natural light.

Imagine yourself here

Link is delighted to offer new one and two bedroom properties at Glenforth Court, which you would be proud to call your home.

Link is one of Scotland's largest and most respected affordable housing providers. We currently manage over 8,300 homes and provide a range of services to over 10,000 customers.

This is a unique opportunity to purchase an apartment for sale through the Scottish Government's New Supply Shared Equity Scheme (NSSE). You can purchase an equity stake in the property of between 51% and 80%, subject to criteria. The scheme is open to buyers 60 years of age and over who can live independently.

About South Queensferry

Located in South Queensferry, Glenforth Court provides affordable homes within easy reach of a variety of local amenities and transport links. The development is within 0.1 miles of a Tesco Superstore, which includes a café, and is less than 1 mile walk or drive from the picturesque town centre, where you can find a range of independent shops, cafes and restaurants.

Glenforth Court is well served by Lothian Buses. A bus stop outside the development provides access to the town centre (8 minutes bus journey), Dalmeny Railway Station (13 minutes) and Edinburgh city centre (41 minutes to Princes Street - West).





Designed for your needs

You and your family can enjoy the communal outdoor space and lounge as great places to socialise with other residents. We offer a mobility scooter storing area for recharging batteries and private parking onsite. A part-time property care assistant will look after the cleaning of communal areas (included in the service charge).

Glenforth Court is designed to blend into the surrounding area with the additional benefit of properties designed for retirement living. We offer a high standard for energy efficient heating, double glazing and well insulated homes helping to keep down the cost of heating.



Apartment features

GENERAL

- Double glazing
- Energy efficient gas central heating with 5 year parts and labour warranty
- Telephone and television point in living room and main bedroom
- Sky/Sky Q connection point in living room
- Easy to reach power points and light switches
- Spacious hallways with storage cupboards and wheelchair accessible doorways
- Fitted double wardrobes in bedroom

KITCHEN

- Quality high gloss white kitchen with wooden block effect worktop
- Stainless-steel electric oven, induction hob and extractor fan (Energy Rating A) Cooker hood
- Washer/ dryer (Energy Rating A)

SHOWER ROOM OR BATHROOM

- Contemporary tiled bathroom with level access shower tray and glass screen
- Extractor ventilation

FINISHES

- Walls painted in neutral colour emulsion
- Oak veneer doors
- Satin anodised aluminium door furniture

SAFETY AND SECURITY

- Video-controlled entry system to flat with handset located in hall
- Mains connected smoke detector
- Carbon monoxide detector

(Images shown are of a similar development and are not an exact representation of properties at Glenforth Court.)

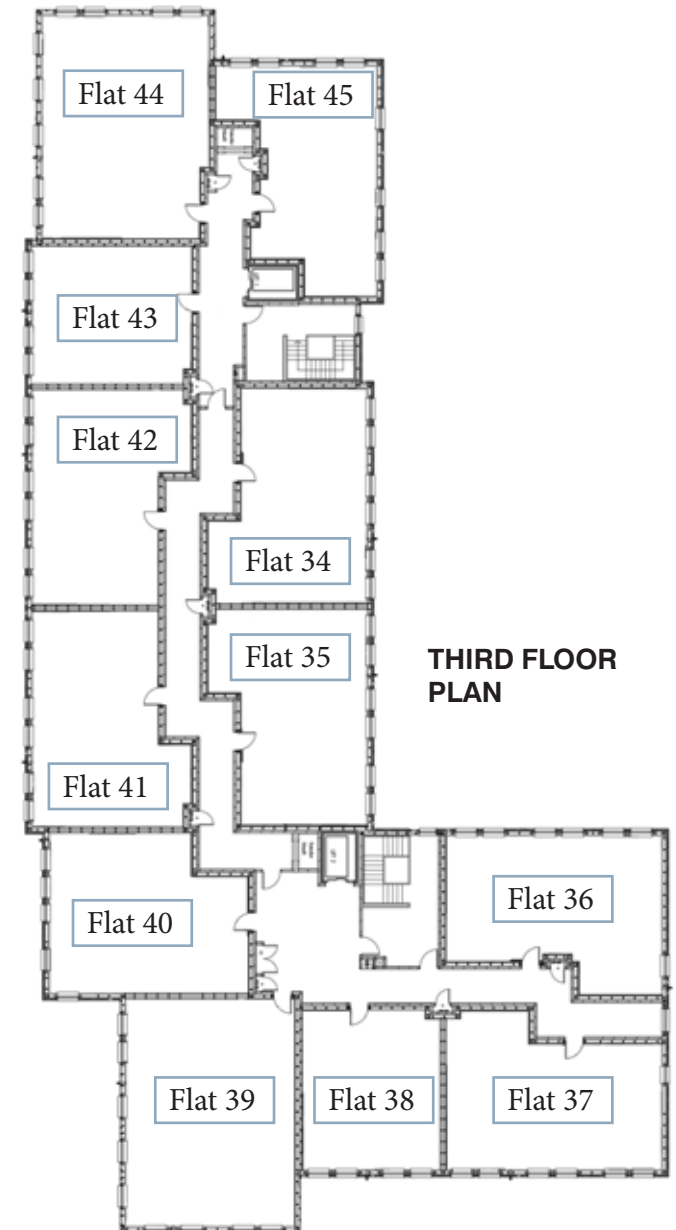
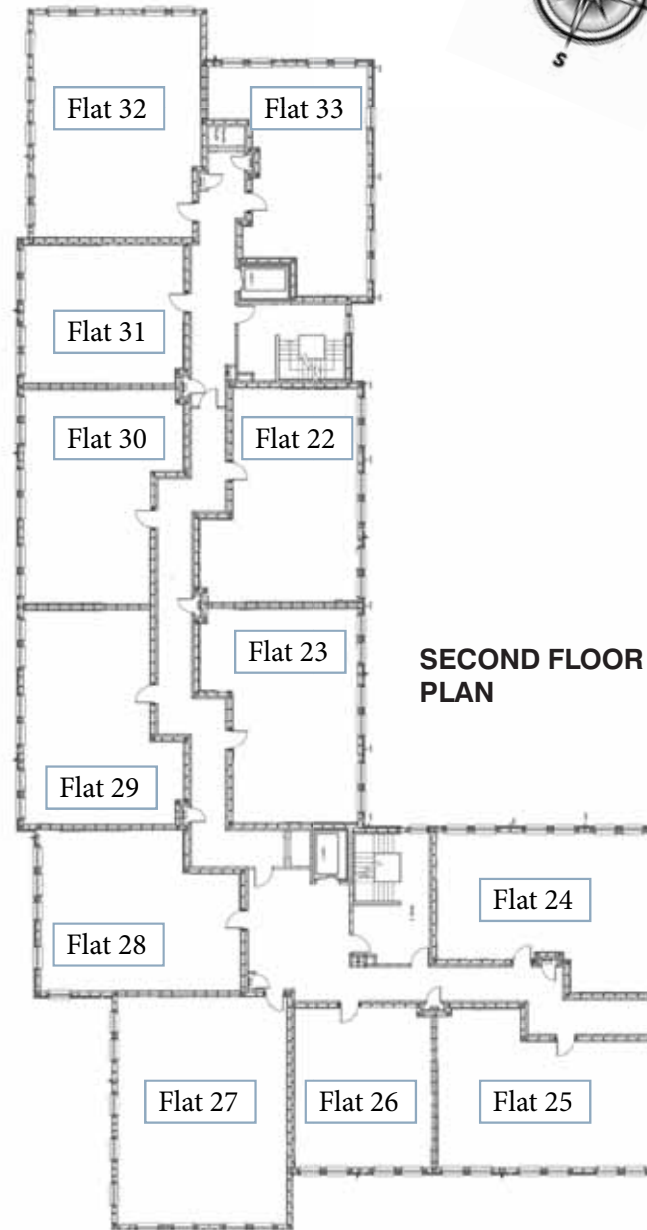
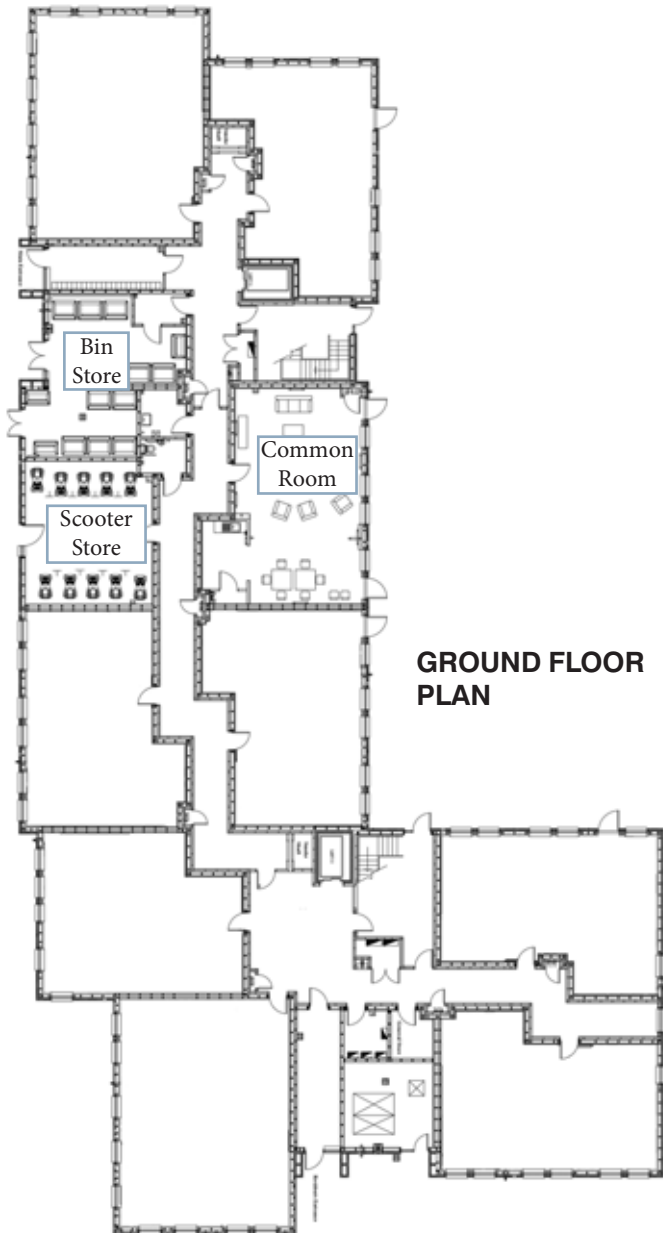


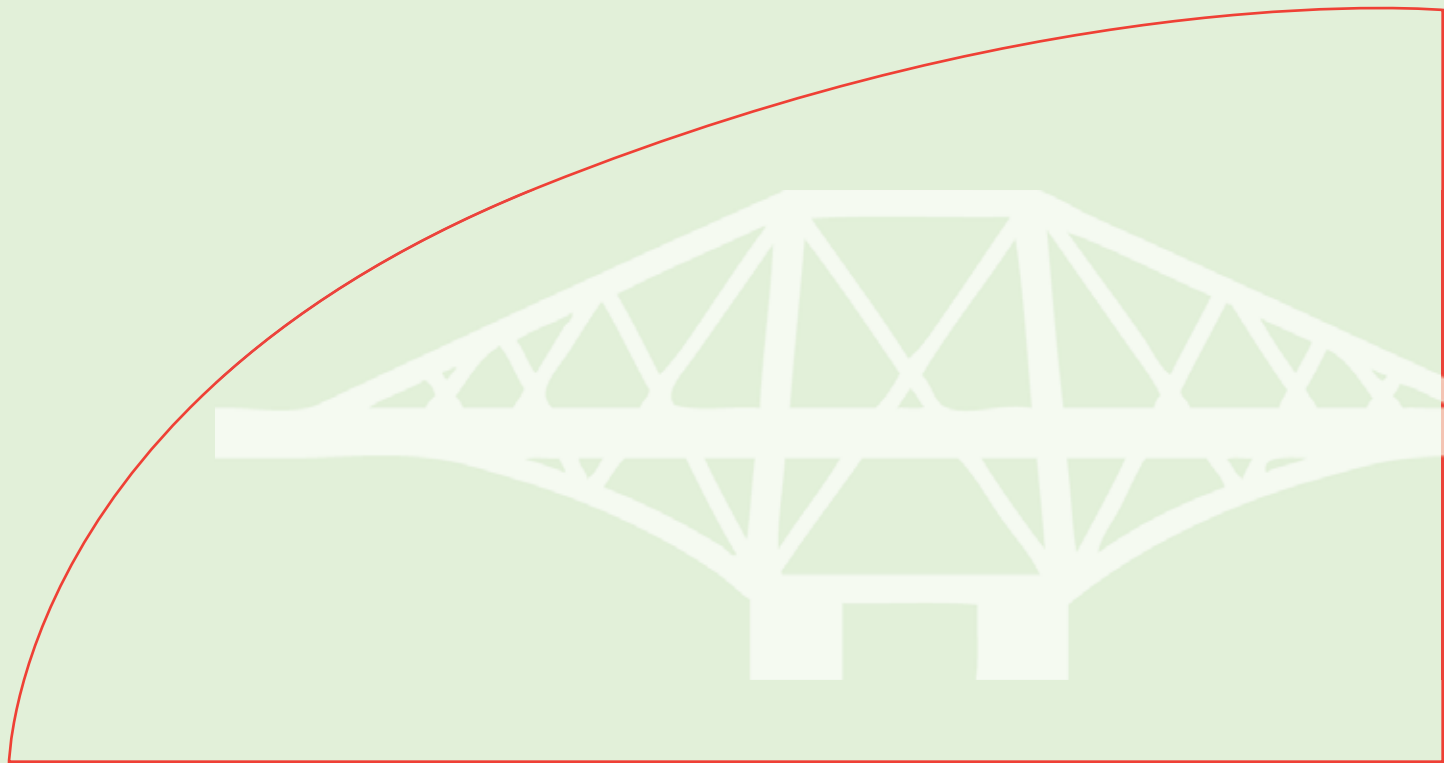
Development features

- Shared outdoor space for socialising
- Shared lounge
- Two lifts providing access to all floors
- Landscaped gardens with raised flower beds
- Mobility scooter store and cycle area
- Unallocated residents car parking available on site
- Part-time property care assistant to clean shared areas
- Pets allowed
- Step free access to the building
- NHBC build warranty
- Bus stop within 1-minute walk
- Walking distance to Tesco, local hotel and restaurant

(Images shown are of a similar development and are not an exact representation of properties at Glenforth Court.)

Flat Types





GLENFORTH COURT, FERRYMUIR, SOUTH QUEENSFERRY, EH30 9BQ



Register your interest

For further information, contact:

Watling House, Callendar Business Park, Falkirk, FK1 1XR

Telephone 01324 417 135

Email housesales@linkhaltd.co.uk

Website www.linkhousing.org.uk/Glenforth



•EDINBURGH•
THE CITY OF EDINBURGH COUNCIL



Link Housing Association Limited is a company registered in Scotland under the Companies Acts, Company Number: SC216300, Registered Office: Link House, 2c New Mart Road, Edinburgh, EH14 1RL. It is registered as a Property Factor Id: PF000355 and authorised and regulated by the Financial Conduct Authority, Reference Number: 674050. Part of the © Link group 2020.